

SOLUTION GUIDE

Meraki for Small Business

Resilient IT for business resiliency



The background of the entire page is a photograph of a woman and a man sitting at a table in a meeting. The woman, on the left, has blonde hair and is wearing a grey patterned top. The man, on the right, has dark hair, a beard, and glasses, and is wearing a yellow polo shirt. They are both looking at a laptop screen, which is partially visible in the foreground. The setting appears to be a modern office or meeting room with large windows in the background.

Small businesses are having to evolve faster than ever.

From hybrid work demands, to migrating to secure cloud technologies, to creating exceptional employee and customer experiences, and beyond.

Having flexible IT to do more with less will enable businesses to stay ahead of changes and succeed in any environment.



A cloud-first platform for transformative business experiences

The Cisco Meraki platform is the foundation for small businesses to ease into change and digitally transform to deliver unparalleled customer and employee experiences.

[Learn more](#)



Simple deployment



Central management



IT cost efficiency



Security prioritization



Flexible APIs and integrations

A complete IT portfolio

Provide connectivity, security, and intelligence through seamless integrations powered by the Meraki platform across Meraki and Cisco products, and third-party apps



SD-Access

Secure connectivity with Wi-Fi 6, powerful switches, and mobile device management



SD-WAN

Enterprise-grade security against online threats and extended cellular connectivity



IoT

Environmental monitoring and protection for teams with smart cameras and sensors

3.2+
MILLION

ACTIVE CUSTOMER
NETWORKS IN 190+
COUNTRIES

99.99%

CLOUD SLA

100%

SMALL BUSINESSES SAVED 10%
OR MORE TIME
TROUBLESHOOTING*

*Source: TechValidate survey in Oct 2020 of 1,620 small business users of Cisco Meraki

Meraki can help you create
revolutionary experiences

**1. Hybrid
Workforce**

**2. Remote
Workforce**

**3. Safe
Environments**

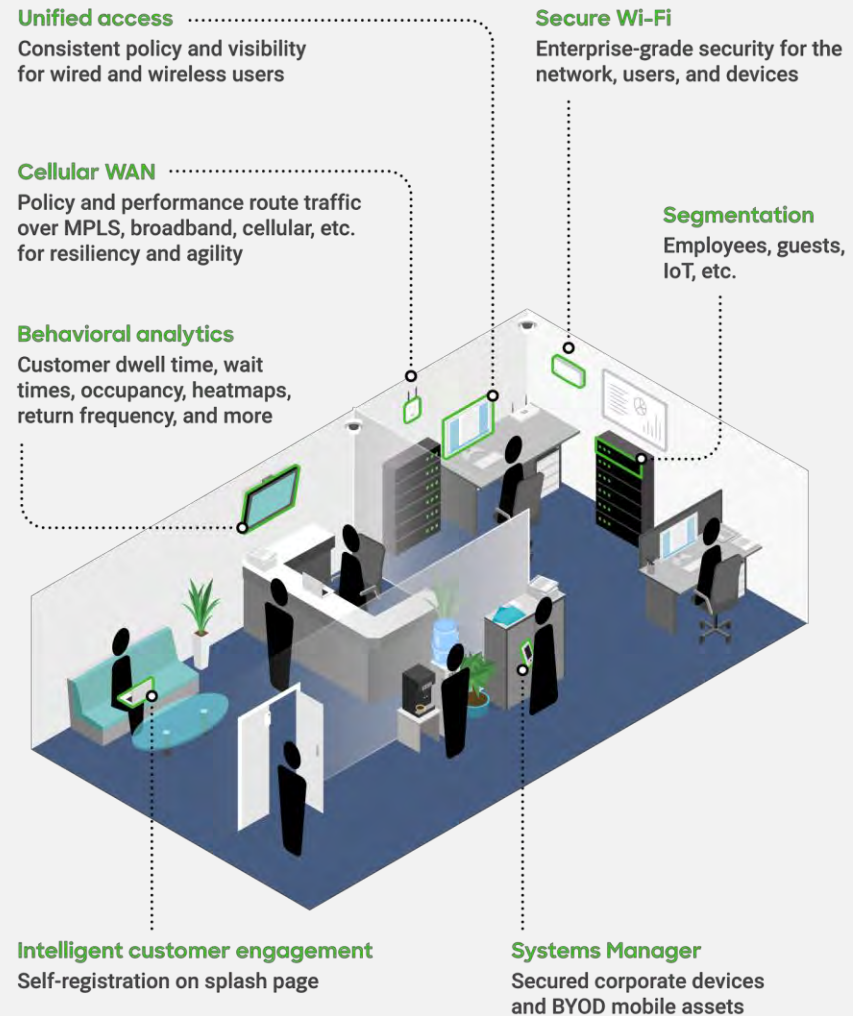
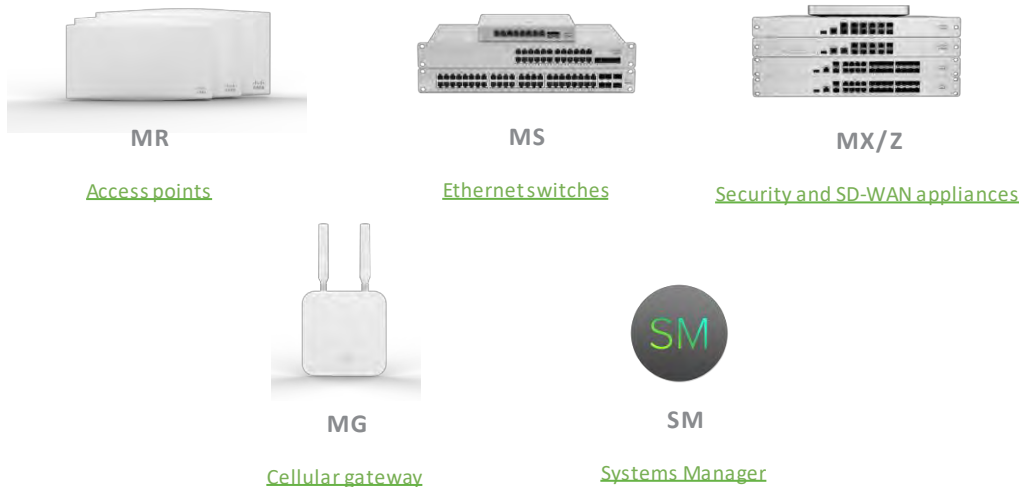
**4. Smart
Spaces**

that allow everyone
to work **more flexibly.**

EXPERIENCE

Hybrid workforce

- Wi-Fi 6 access points for flawless experiences, with built-in location analytics
- Stackable switches to connect wired and wireless office devices
- All-in-one secure connectivity for remote workers with teleworker gateways
- Dedicated Wi-Fi scanning radio for always-on wireless IPS security
- Visibility and security of mobile devices and business data with Systems Manager
- Optimal network performance with failover or primary cellular connectivity



EXPERIENCE

Remote workforce

- Wi-Fi 6 for resilient connectivity with actionable network health insights
- MR teleworker VPN for full remote connectivity and corporate network access
- All-in-one secure connectivity for remote workers with teleworker gateways
- Visibility and security of BYOD and company mobile devices with Systems Manager
- Auto VPN that encrypts data and securely connects remote sites in just 2 clicks
- Monitor performance of business-critical SaaS apps used by teleworkers



MR

[Access points](#)



Systems Manager

[Systems Manager](#)



MX

[Security and SD-WAN appliances](#)



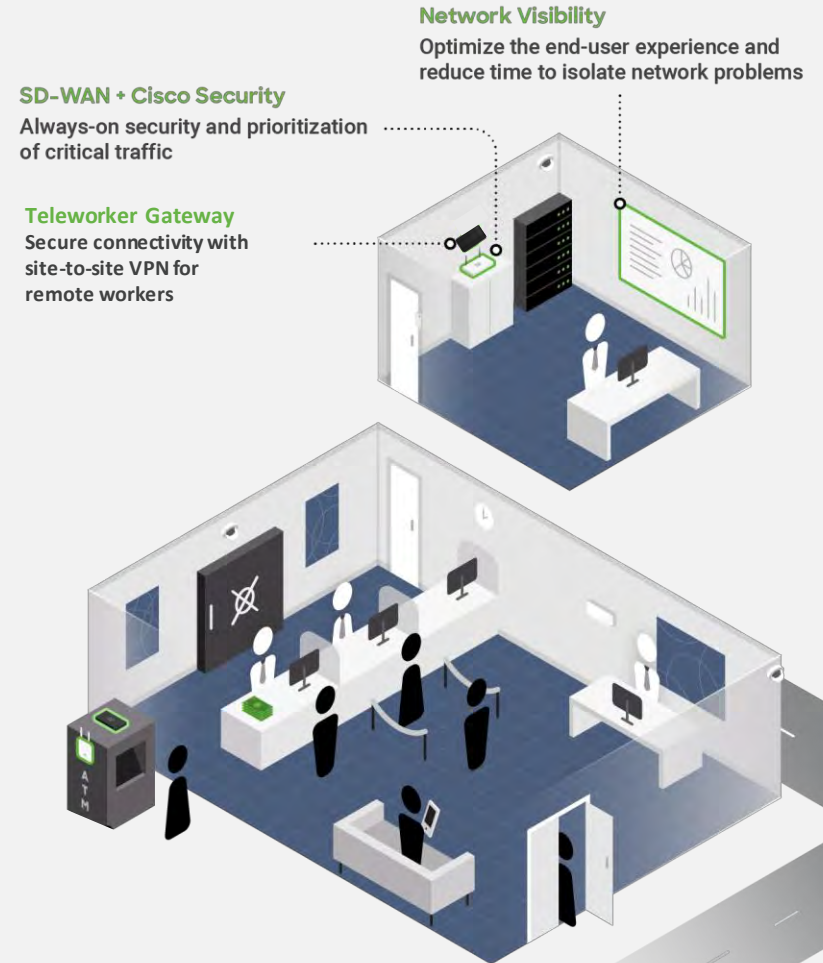
Z3

[Teleworker gateway](#)



Meraki Insight

[Meraki Insight](#)



EXPERIENCE

Safe Environments

- Industry-leading security from Cisco Talos threat intelligence (Umbrella, AMP, IPS)
- SD-WAN for dynamic failover and policy- and performance-based routing
- Site-to-site VPN connectivity in three clicks with Auto VPN
- Rich analytics for application, ISP, and voice provider health
- Safe occupancy for physical spaces with precise object detection and monitoring
- IoT sensor integration for real-time environmental monitoring



MX/Z

[Security and SD-WAN appliances](#)



Meraki Insight

[Meraki Insight](#)



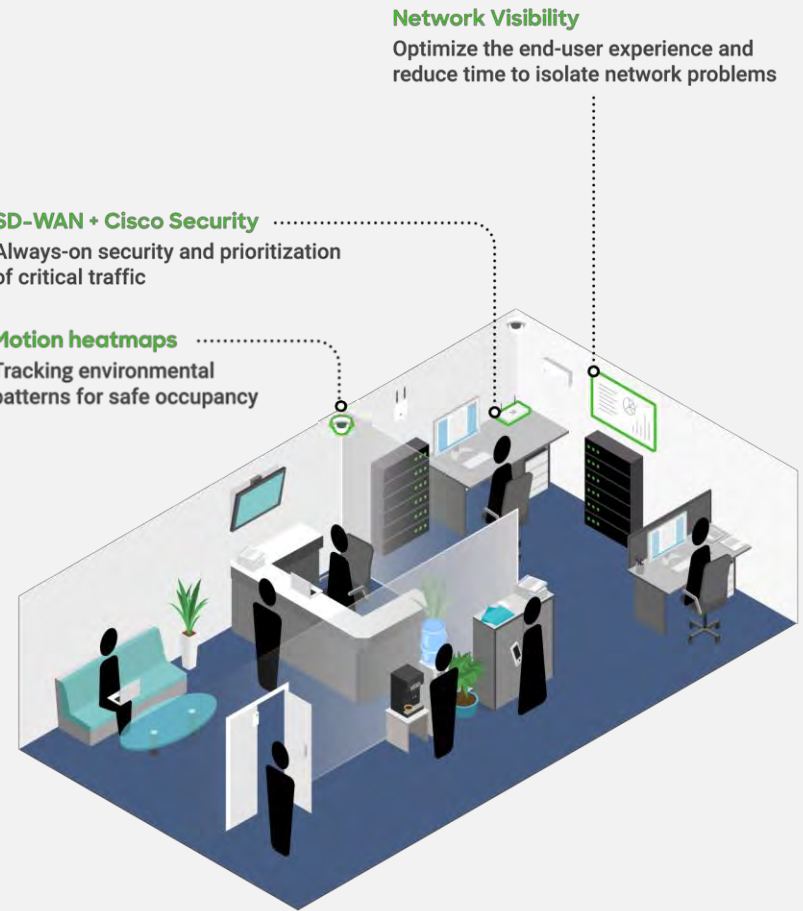
MV

[Smart cameras](#)



MT

[Environmental sensors](#)



EXPERIENCE

Smart Spaces

- Wi-Fi 6 with built-in location analytics for understanding foot traffic and customer behavior, and optimizing marketing
- Physical security and cost savings from real-time environmental insights without on-premises infrastructure with smart cameras
- People and car detection for safer experiences, motion heatmaps, customer alerting at counters, alerting for suspicious activity, line length detection, and ease of investigating incidents
- Protection of critical IT infrastructure by monitoring temperature, humidity, water leaks, and intrusion with sensors
- Open APIs and an ecosystem of partners for turnkey solutions, e.g. EVERYANGLE enables face-mask detection and traffic analytics



MR

Access points



MV

Smart cameras



MT

Environmental sensors



A trusted partner



“Deploying Meraki devices for all-in-one wireless, security, SD-WAN, and Z3 teleworker gateways let us work remotely and transition to a hybrid office.”

— Aaron Sturniolo, IT Director, [RRMM](#)

“Partnering with Meraki, Cisco Umbrella, and Purple gave Platform a better chance at surviving in its early days, and now allows us to better position ourselves for future growth.”



— Lucas Weintraub,
Co-Founder, Platform

Trusted by 620k+ small and large enterprises worldwide





**Get a free trial to accelerate your digital transformation
with Cisco Meraki**

[MERAKI.COM](https://www.meraki.com)